

LOC I-NKW 109.3	APCH CRS 310°	Rwy Idg 12,003 TDZE 9 Arprt Elev 9
---------------------------	-------------------------	---

AL-2507 [USN]

DIEGO GARCIA NSF (FJDG)

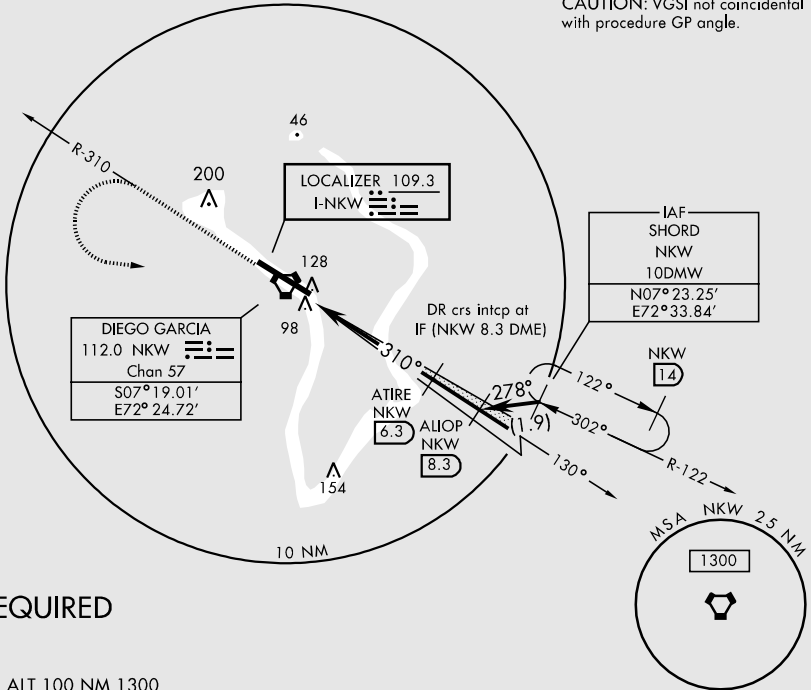
* When ALS inop, increase vis CAT AB ¼ mile.
 ** When ALS inop, increase vis ¼ mile.



MISSED APPROACH: Climb to 2000 via NKW R-310, turn left drct IAF and hold.

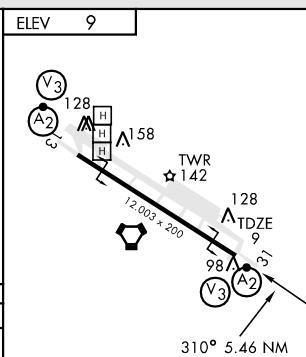
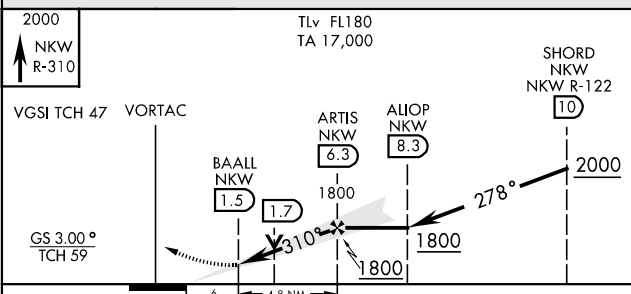
ATIS 282.0	DIEGO GARCIA APP CON 134.1 249.525	DIEGO GARCIA TOWER 126.2 340.2	GND CON 118.4 299.6
----------------------	--	--	-------------------------------

CAUTION: VGSI not coincidental with procedure GP angle.



DME REQUIRED

EMERG SAFE ALT 100 NM 1300



CATEGORY	A	B	C	D	E
S-ILS 31*	209-½	200 (200-½)	209-¾	200 (200-¾)	NA
S-LOC 31**	340-¾		331 (400-¾)		NA
CIRCLING	520-1	511 (600-1)	520-1½ 511(600-1½)	560-2 551 (600-2)	NA

FAF to MAP 4.8 NM					
Knots	60	90	120	150	180
Min:Sec	4:48	3:12	2:24	1:55	1:36