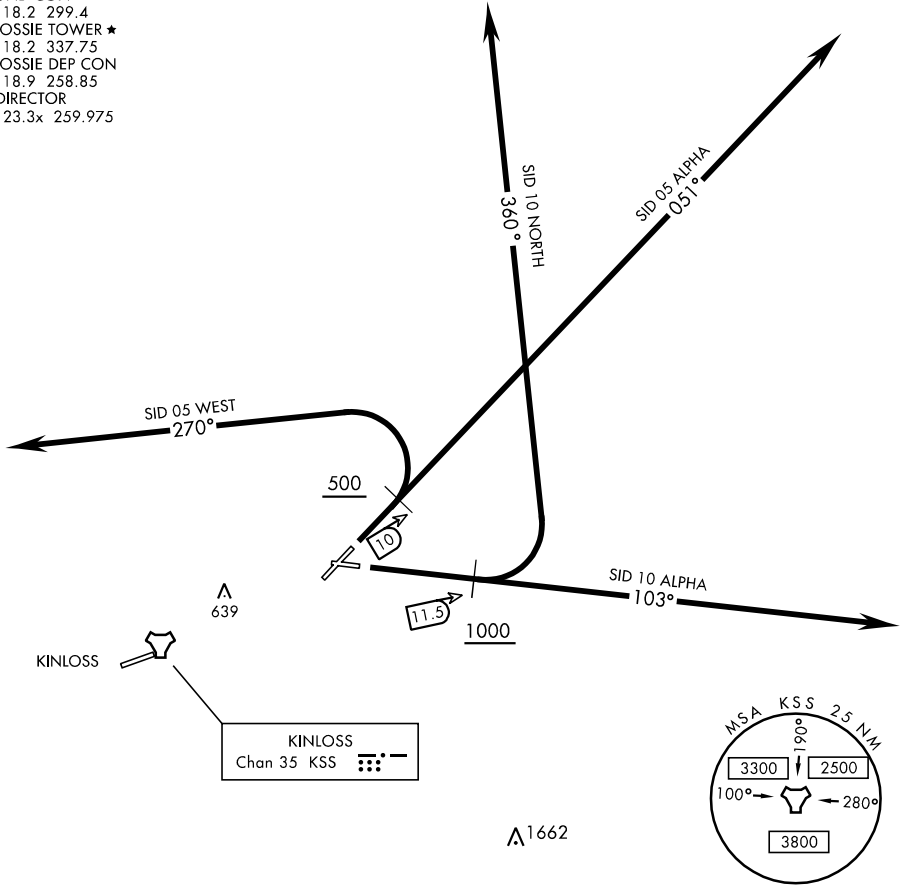


ATIS ★ 269.025
 GND CON
 118.2 299.4
 LOSSIE TOWER ★
 118.2 337.75
 LOSSIE DEP CON
 118.9 258.85
 DIRECTOR
 123.3x 259.975



DEPARTURE ROUTE DESCRIPTION

TAKE-OFF RWY 05: Cross DER at or above 35 ft AGL/59 ft MSL, thence

05 ALPHA: Climb on rwy track 049° to at or above 1550 and call DEP CON, then fly as directed. Aircraft departing into the instrument pattern are to follow the SID climbing to 2550 and call DIRECTOR.

05 WEST: Climb on rwy track 049° to at or above 550 or KSS 10 DME whichever is later, then left on track 270° to at or above 1650, call DEP CON then fly as directed. Acft departing into the instrument pattern are to follow the SID climbing to 2550 and call DIRECTOR.

TAKE-OFF RWY 10: Cross DER at or above 35 ft AGL/72 ft MSL, thence

10 ALPHA: Climb on rwy track 102° to at or above 2540, call DEP CON then fly as directed.

10 NORTH: Climb on rwy track 102° to at or above 1040 at KSS 11.5 DME. Turn left on track 360° to at or above 1540, call DEP CON then fly as directed. Acft departing into the instrument pattern are to follow the SID and call DIRECTOR.