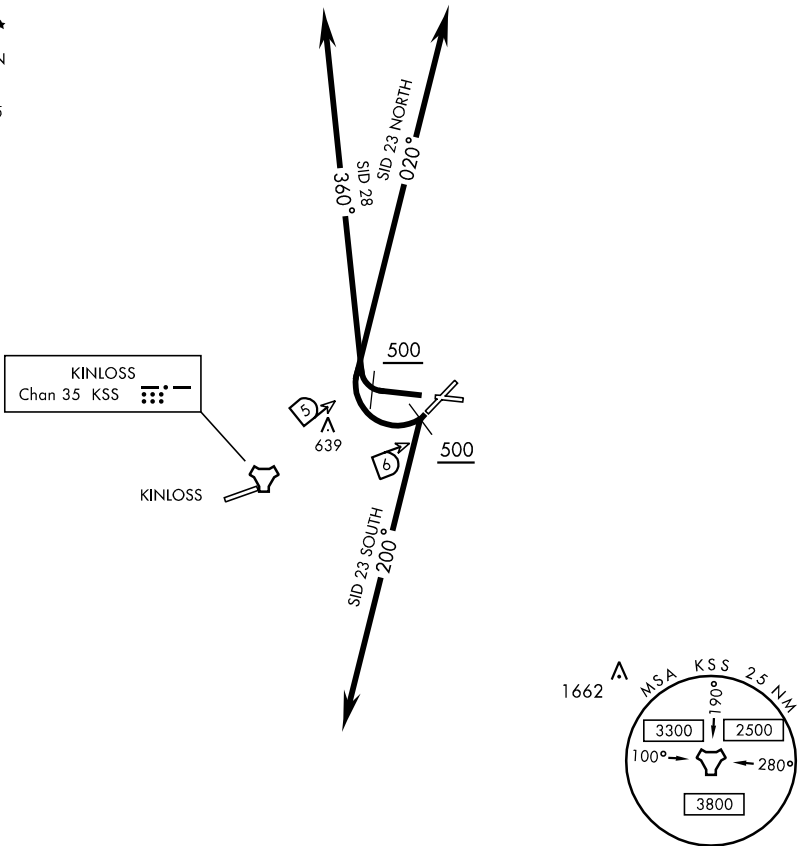


ATIS ★ 269.025
 GND CON
 118.2 299.4
 LOSSIE TOWER ★
 118.2 337.75
 LOSSIE DEP CON
 118.9 258.85
 DIRECTOR
 123.3x 259.975



DEPARTURE ROUTE DESCRIPTION

TAKE-OFF RWY 23: Cross DER at or above 35 ft AGL/55 ft MSL, thence ...

23 NORTH: Climb on rwy track 229° to at or above 530 or KSS 6 DME, whichever is later, then right on track 020° to at or above 1630, call DEP CON then fly as directed. Aft departing into the instrument pattern are to follow the SID climbing to 2030 and call DIRECTOR.

23 SOUTH: Climb on rwy track 229° at or above 530 or KSS 6 DME, whichever is later, then left on track 200° to at or above 5530, call DEP CON then fly as directed.

TAKE-OFF RWY 28: Cross DER at or above 35 ft AGL/95 ft MSL, thence ...

28: Climb on rwy track 282° at or above 540 or KSS 5 DME, whichever is later, then right on track 360° to at or above 1540, call DEP CON then fly as directed. Aft departing into the instrument pattern are to follow the SID and call Director. Aft able to depart VMC are encouraged to fly the VFR noise abatement procedures i.e. once safely airborne turn right onto track 310° until coasting out, then right onto track 360°.