

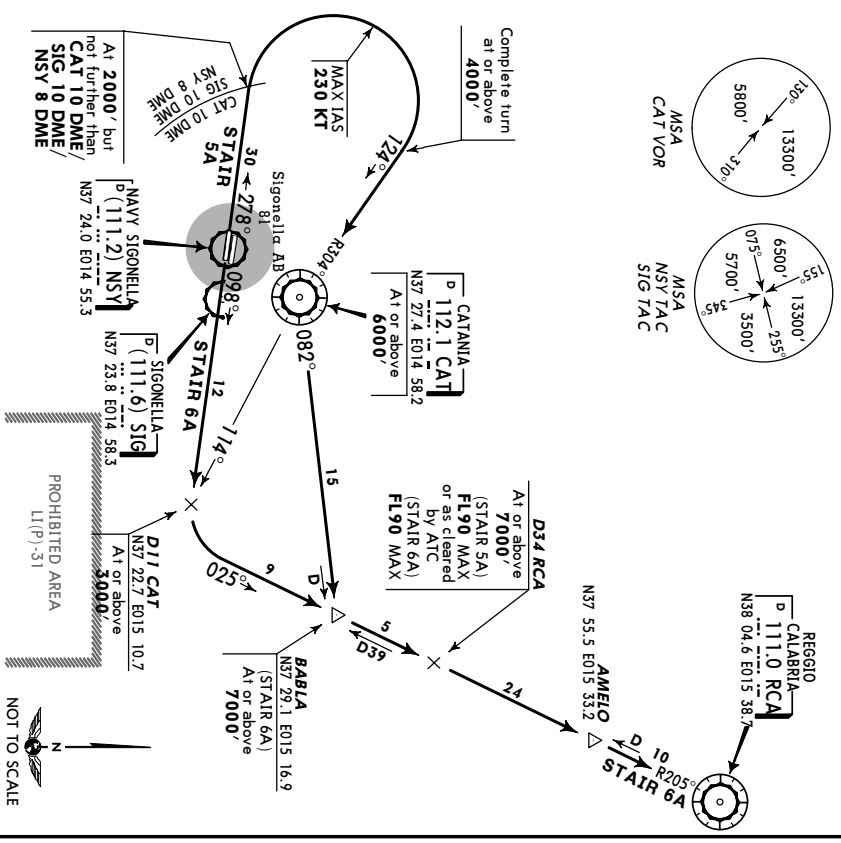
JEPPesen 26 APR 02 **20-3**

CATANIA, ITALY
SIGONELLA AB

TRANS LEVEL: BY ATC
 TRANS ALTI: 7000'

STAIR 5A, STAIR 6A

DEPARTURES
 (RWYS 28L/10R)
 BASED ON CAT VORDME



STAIR 5A

This SID requires a minimum climb gradient of 304' per nm (5%) until leaving 7000'.

Grnd speed-Kts	75	100	150	200	250	300
304' per nm	380	506	760	1013	1266	1519

SID	RWY	ROUTING	ALTITUDE
RWY 28L:		Execute turns after take-off with MAX TAS 267 KT, bank 15° or rate of turn 1.09°/sec or MAX TAS 320 KT, bank 20° or rate of turn 1.27°/sec if allows lesser bank.	
STAIR 5A	STAIR 28L	Climb on 278° track, at 2000', but not further than CAT 10 DME/SIG 10 DME/NSY 8 DME turn above 4000', complete turn at or above 4000', intercept CAT R-304 inbound to CAT VORDME, intercept CAT R-082 to Babla Int, then to Amelio Int.	Cross CAT VORDME at or above 6000', D34 RCA at or above 7000', and at FL90 MAX or as cleared by ATC.
STAIR 6A	STAIR 10R	On 088° track to D11 CAT, turn LEFT, intercept RCA R-205 inbound to RCA VORDME.	Cross D11 CAT at or above 3000', Babla Int at or above 7000', D34 RCA at or above 7000' and at FL90 MAX.

CHANGES: New chart.

© JEPPesen SANDERSON, INC., 2002. ALL RIGHTS RESERVED.

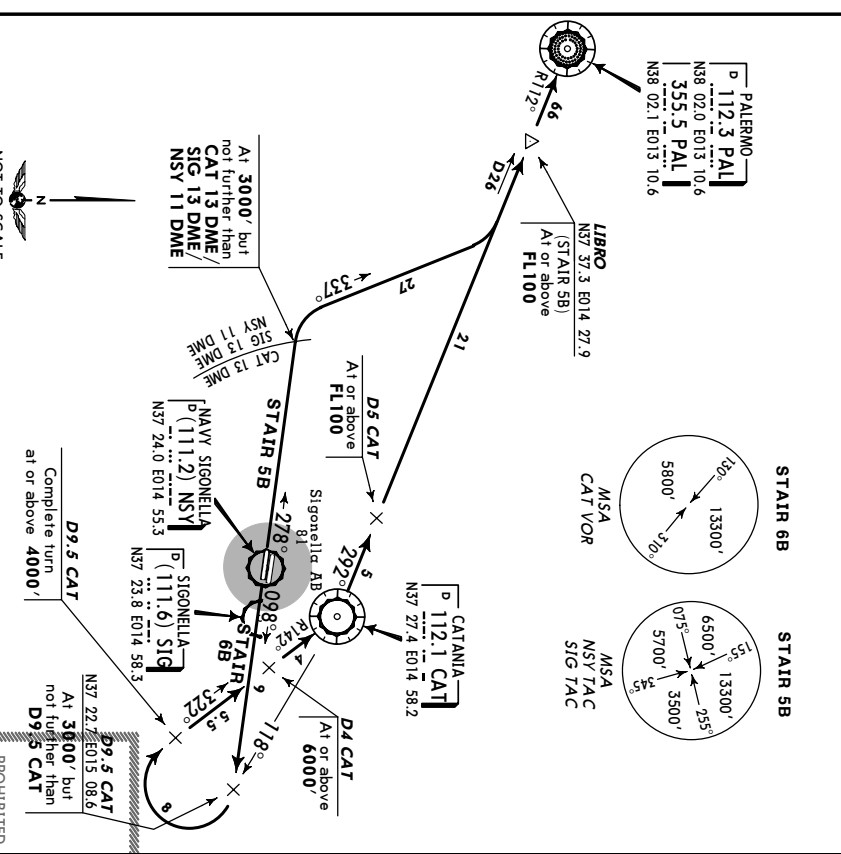
JEPPesen 26 APR 02 **20-3A**

CATANIA, ITALY
SIGONELLA AB

TRANS LEVEL: BY ATC
 TRANS ALTI: 7000'

STAIR 5B, STAIR 6B

DEPARTURES
 (RWYS 28L/10R)
 BASED ON CAT VORDME



STAIR 5B

This SID requires a minimum climb gradient of 401' per nm (6.6%) for ATC purposes.

Grnd speed-Kts	75	100	150	200	250	300
401' per nm	501	668	1003	1337	1671	2005

SID	RWY	ROUTING	ALTITUDE
RWY 28L:		Execute turns after take-off with MAX TAS 267 KT, bank 15° or rate of turn 1.09°/sec or MAX TAS 320 KT, bank 20° or rate of turn 1.27°/sec if allows lesser bank.	
STAIR 5B	STAIR 28L	Climb on 278° track, at 3000', but not further than CAT 13 DME/SIG 13 DME/NSY 11 DME turn RIGHT, 337° track, intercept CAT R-292 to Libro Int.	Cross Libro Int at or above 3000', D5 CAT at or above 4000', D5 CAT at or above 4000', D5 CAT at or above 4000', D5 CAT at or above 4000'.
STAIR 6B	STAIR 10R	Climb on 098° track, at 3000', but not further than D9.5 turn RIGHT, complete turn at or above 4000', intercept CAT R-142 inbound to CAT VORDME, intercept CAT R-292 to PAL VORDME/INDB.	Cross D4 CAT at or above 6000', D5 CAT at or above FL100.

CHANGES: New chart.

© JEPPesen SANDERSON, INC., 2002. ALL RIGHTS RESERVED.

CATANIA, ITALY
 SIGONELLA AB

SID

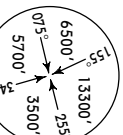
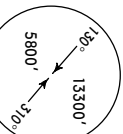
TRANS LEVEL: BY ATC
 TRANS ALT: 7000

STAIR 6C, 5G STAIR 5C

STAIR 5C
 STAIR 6C
 STAIR 5G
 DEPARTURES
 (RWYS 28L/10R)
 BASED ON CAT VORDME

REGGIO CALABRIA
 P 111.0 RCA
 N38 04.6 E015 38.7

AMEIO
 N37 55.5 E015 33.2



MISA CAT VOR
 NSY TAC
 SIG TAC

At 2000' but not further than CAT 10 DME/
 SIG 10 DME/
 NSY 8 DME

At 2000' but not further than CAT 10 DME/
 SIG 10 DME/
 NSY 8 DME

CATANIA
 P 112.1 CAT
 N37 27.4 E014 58.2

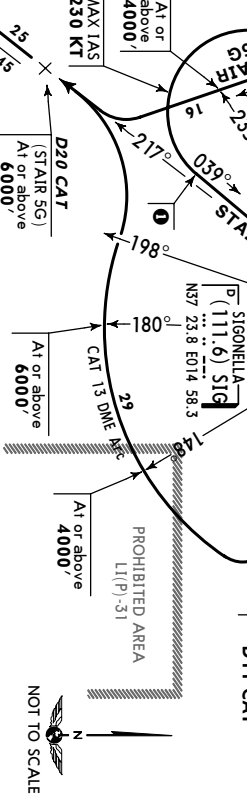
At or above 6000'

BABIA
 N37 29.1 E015 16.9

D34 RCA
 At or above 7000'
 FL90 MAX or as cleared by ATC

D11 CAT
 N37 22.7 E015 10.2

At 3000' but not further than D11 CAT



NEIDA
 N36 51.8 E014 23.6

MAX IAS 230 KT

Complete turn at or above 4000'

These SIDs require a minimum climb gradient of 304' per nm (5%) until leaving 7000'.
 of Gnd speed-Kts 75 100 150 200 250 300
 304' per nm 380 506 760 1013 1266 1519

Execute turns after take-off with STAIR 5G: MAX TAS 267 KT, bank 15° or rate of turn 1.27°/sec if allows lesser bank.
 STAIR 5C: MAX TAS 267 KT, bank 15° or rate of turn 1.09°/sec or MAX TAS 320 KT, bank 20° or rate of turn 1.27°/sec if allows lesser bank.
 STAIR 5G: MAX IAS 230 KT, bank 15° or rate of turn 1.09°/sec or MAX IAS 275 KT, bank 20° or rate of turn 1.27°/sec if allows lesser bank.

SID	ROUTING	ALTITUDE
STAIR 28L	Climb on 278° track, at 2000', but not further than CAT 10 DME/SIG 10 DME/NSY 8 DME turn LEFT (MAX IAS 230 KT), complete turn at or above 4000', intercept CAT R-219 inbound to CAT VOR-DME, intercept CAT R-082 to Babia Int, then to Amelio Int.	Cross CAT VORDME at or above 6000', D34 at or above 7000', and at FL90 MAX or as cleared by ATC.
STAIR 6C	Climb on 098° track, at 3000', but not further than D11 CAT turn RIGHT, proceed along CAT 13 DME arc, when passing CAT R-198 turn LEFT, intercept CAT R-217 to Neida Int.	Cross CAT R-148 at or above 4000', CAT R-180 at or above 6000'.
STAIR 10R	Climb on 278° track, at 2000', but not further than CAT 10 DME/SIG 10 DME/NSY 8 DME turn LEFT, intercept CAT R-217 to Neida Int.	Cross CAT R-235 at or above 4000', D20 CAT at or above 6000'.
STAIR 28L	Climb on 278° track, at 2000', but not further than CAT 10 DME/SIG 10 DME/NSY 8 DME turn LEFT, intercept CAT R-217 to Neida Int.	Cross CAT R-235 at or above 4000', D20 CAT at or above 6000'.

SID	ROUTING	ALTITUDE
STAIR 5C	Climb on 278° track, at 2000', but not further than CAT 10 DME/SIG 10 DME/NSY 8 DME turn LEFT (MAX IAS 230 KT), complete turn at or above 4000', intercept CAT R-219 inbound to CAT VOR-DME, intercept CAT R-082 to Babia Int, then to Amelio Int.	Cross CAT VORDME at or above 6000', D34 at or above 7000', and at FL90 MAX or as cleared by ATC.
STAIR 10R	Climb on 098° track, at 3000', but not further than D11 CAT turn RIGHT, proceed along CAT 13 DME arc, when passing CAT R-198 turn LEFT, intercept CAT R-217 to Neida Int.	Cross CAT R-148 at or above 4000', CAT R-180 at or above 6000'.
STAIR 28L	Climb on 278° track, at 2000', but not further than CAT 10 DME/SIG 10 DME/NSY 8 DME turn LEFT, intercept CAT R-217 to Neida Int.	Cross CAT R-235 at or above 4000', D20 CAT at or above 6000'.

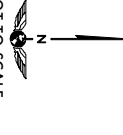
CATANIA, ITALY
 SIGONELLA AB

SID

TRANS LEVEL: BY ATC
 TRANS ALT: 7000

STAIR 5D, STAIR 5E, STAIR 5F
 DEPARTURES
 (RWY 28L)
 BASED ON CAT NDB

REGGIO CALABRIA
 P 111.0 RCA
 N38 04.6 E015 38.7



MISA NSY TAC
 SIG TAC

LIBRO
 D26 CAT
 D28 SIG
 N37 37.3 E014 27.9

At or above FL100

D22 CAT
 D24 SIG
 At or above 7000'

Complete turn at or above 5000'

CATANIA
 P 112.1 CAT
 N37 27.4 E014 58.2

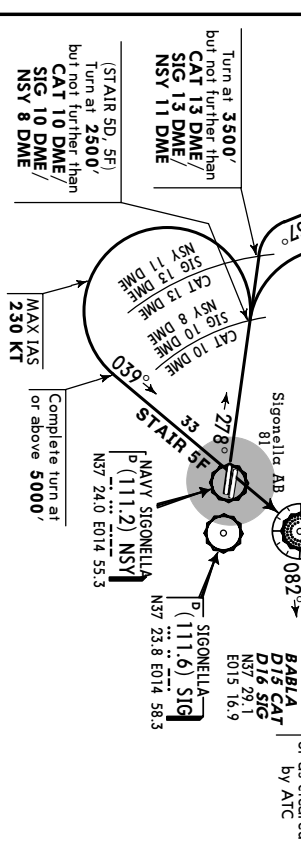
At or above 6000'

BABIA
 N37 29.1 E015 16.9

D34 RCA
 At or above 7000'
 FL90 MAX or as cleared by ATC

D16 CAT
 N37 29.1 E015 16.9

At or above 7000'



These SIDs require minimum climb gradients of STAIR 5D, 5F: 350' per nm until leaving 7000'.
 STAIR 5E: 380' per nm until leaving FL100 for ATC purposes.
 Execute turns after take-off with MAX TAS 267 KT, bank 15° or rate of turn 1.09°/sec or MAX TAS 320 KT, bank 20° or rate of turn 1.27°/sec if allows lesser bank.

SID	ROUTING	ALTITUDE
STAIR 5D	Climb on 278° track, at 2500', but not further than CAT 10 DME/SIG 10 DME/NSY 8 DME turn RIGHT (MAX IAS 230 KT), complete turn at or above 5000', intercept 124° bearing to CAT NDB, 082° bearing to Babia Int, then to Amelio Int.	Cross CAT NDB at or above 6000', D34 RCA at or above 7000', and at FL90 MAX or as cleared by ATC.
STAIR 5E	Climb on 278° track, at 3500', but not further than CAT 13 DME/SIG 13 DME/NSY 11 DME turn RIGHT, intercept 292° bearing from CAT NDB to Libro Int.	Cross D22 CAT/D24 SIG at or above 7000', Libro Int at or above FL100.
STAIR 5F	Climb on 278° track, at 2500', but not further than CAT 10 DME/SIG 10 DME/NSY 8 DME turn LEFT (MAX IAS 230 KT), complete turn at or above 5000', intercept 039° bearing to CAT NDB, 082° bearing to Babia Int, then to Amelio Int.	Cross CAT NDB at or above 6000', D34 RCA at or above 7000', Libro MAX or as cleared by ATC.

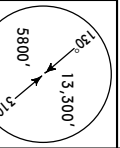
SID	ROUTING	ALTITUDE
STAIR 5D	Climb on 278° track, at 2500', but not further than CAT 10 DME/SIG 10 DME/NSY 8 DME turn RIGHT (MAX IAS 230 KT), complete turn at or above 5000', intercept 124° bearing to CAT NDB, 082° bearing to Babia Int, then to Amelio Int.	Cross CAT NDB at or above 6000', D34 RCA at or above 7000', and at FL90 MAX or as cleared by ATC.
STAIR 5E	Climb on 278° track, at 3500', but not further than CAT 13 DME/SIG 13 DME/NSY 11 DME turn RIGHT, intercept 292° bearing from CAT NDB to Libro Int.	Cross D22 CAT/D24 SIG at or above 7000', Libro Int at or above FL100.
STAIR 5F	Climb on 278° track, at 2500', but not further than CAT 10 DME/SIG 10 DME/NSY 8 DME turn LEFT (MAX IAS 230 KT), complete turn at or above 5000', intercept 039° bearing to CAT NDB, 082° bearing to Babia Int, then to Amelio Int.	Cross CAT NDB at or above 6000', D34 RCA at or above 7000', Libro MAX or as cleared by ATC.

LICZ SIGONELLA AB 16 FEB 01 **(25-1)** **JEPPESSEN** **CATANIA, ITALY**
CIRCLING VOR DME-Papa

CATANIA Radar (APP)	CATANIA Director (APP)	SIGONELLA Tower	Ground
119.25	120.8	118.05	121.95

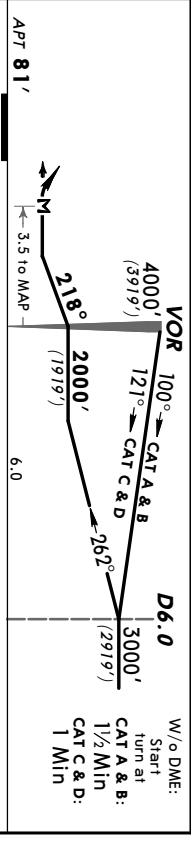
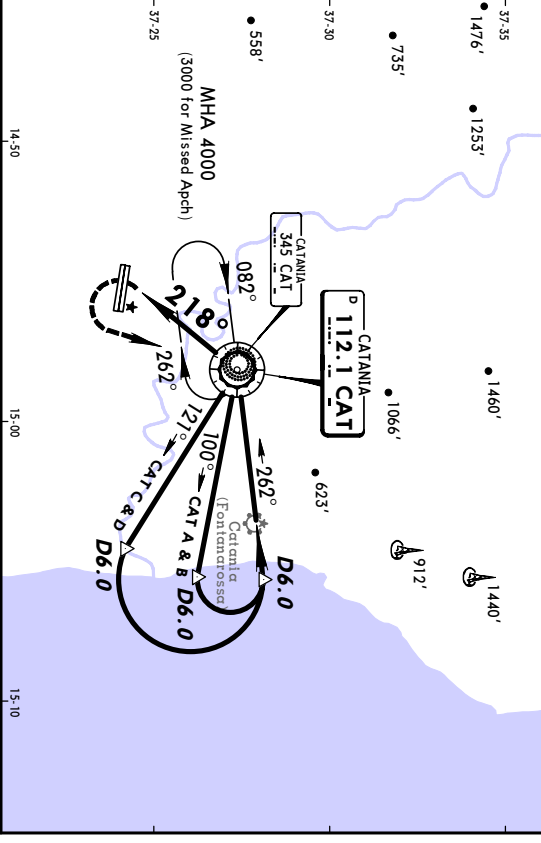
For UHF see MIL-101 listing

VOR CAT	Final Appch Crs	Minimum Alt	MDA(H) Refer to Minimums	Appt Elev
112.1	218°	2000' (1919')		81'



MISSED APCH: Turn LEFT to VOR climbing to 3000'.
 Alt Set: hPa Appt Elev: 3 hPa Trans level: By ATC Trans alt: 7000' (6919')

High terrain & obst North, South & West of airport. Mountains up to 10902' 21 NM North of airport. During periods of extensive volcanic venting, possible damage through volcanic ash when airborne.



GRD speed-Kts	70	90	100	120	140	160	Lighting - Refer to Airport Chart	3000'	CAT
VOR to MAP	3:5	3:00	2:20	2:06	1:45	1:30	LT	112.1	

JAR OPS	CEILING REQUIRED		CIRCLE-TO-LAND	
	Not authorized North of rwy			
	Max Kts	MDA(H)		CEIL-VIS
	A 90	600' (519')		600' 1600m
B 120	690' (609')	600' 2400m		
C 140	690' (609')	600' 3600m		
D 165	790' (709')	600' 3600m		

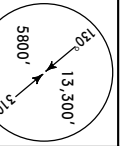
APPT 81' ← 3.5 to MAP

LICZ SIGONELLA AB 16 FEB 01 **(25-2)** **JEPPESSEN** **CATANIA, ITALY**
CIRCLING VOR DME-Sierra

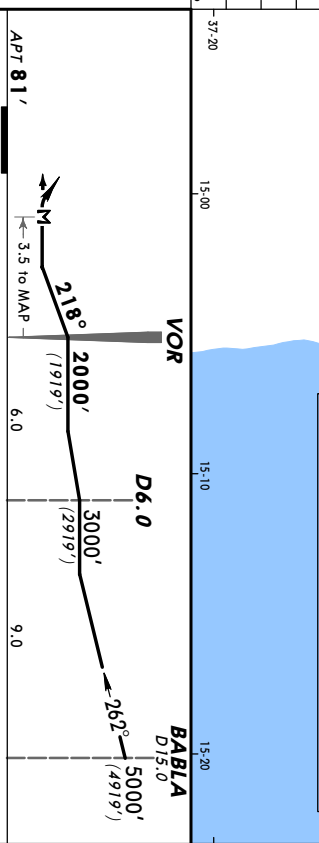
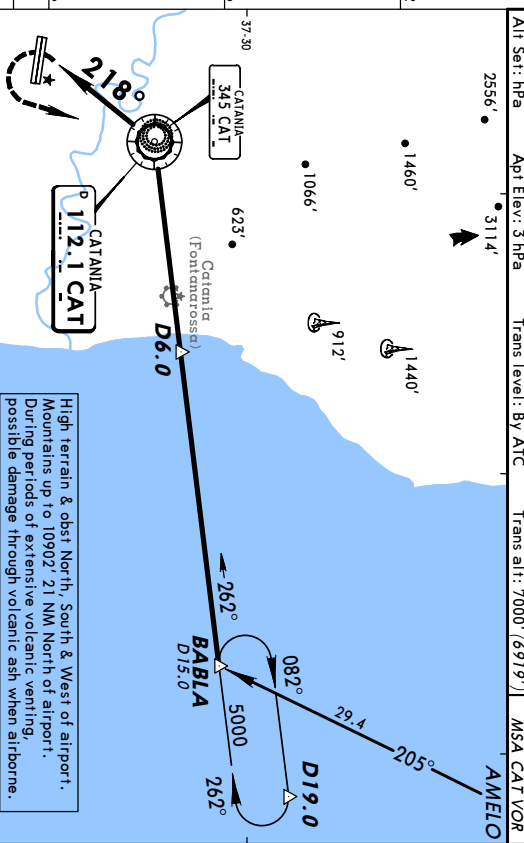
CATANIA Radar (APP)	CATANIA Director (APP)	SIGONELLA Tower	Ground
119.25	120.8	118.05	121.95

For UHF see MIL-101 listing

VOR CAT	Final Appch Crs	Minimum Alt	MDA(H) Refer to Minimums	Appt Elev
112.1	218°	2000' (1919')		81'



MISSED APCH: Turn LEFT to VOR climbing to 3000'.
 Alt Set: hPa Appt Elev: 3 hPa Trans level: By ATC Trans alt: 7000' (6919')



GRD speed-Kts	70	90	100	120	140	160	Lighting - Refer to Airport Chart	3000'	CAT
VOR to MAP	3:5	3:00	2:20	2:06	1:45	1:30	LT	112.1	

JAR OPS	CEILING REQUIRED		CIRCLE-TO-LAND	
	Not authorized North of rwy			
	Max Kts	MDA(H)		CEIL-VIS
	A 90	600' (519')		600' 1600m
B 120	690' (609')	600' 2400m		
C 140	690' (609')	600' 3600m		
D 165	790' (709')	600' 3600m		

APPT 81' ← 3.5 to MAP

